

PENNSYLVANIA CONOY  
COLORED TRADE BEAD CHART

VOLUME XI

A descriptive chart, featuring a number of earliest faceted glass beads from a site in Lancaster County, Pennsylvania.



Picture of Conoy Indians, Showing Dress

Copyright © 1977  
by Gerald B. Fenstermaker  
all rights reserved

## Conoy Peace Medal

King George II Peace Medal with Queen on opposite side. Lug was for fastening to necklace. Probably given by William Penn when Conoys visited him in Philadelphia with Conestoga Indians.

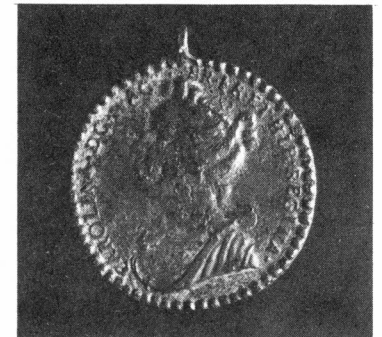
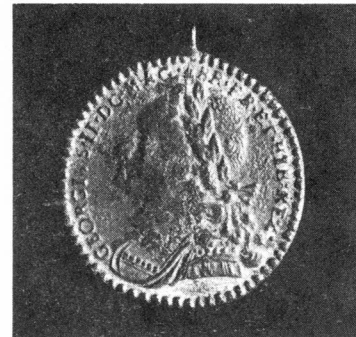


Plate I

GEORGIVS II DC MAC BR FR  
ET HIB REX

CAROLINA DC MAC BR FR  
ET HIB REGINA

Diameter of Peace Medals: 25 mm

Material: Silver

From G. B. Fenstermaker Collection

The Conoy, an Algonquin tribe closely related to the Delawares, entered Pennsylvania in the late 15th and early 16th centuries. They were driven from western Maryland by invading Susquehannocks who had been defeated by the Iroquois in 1675. The Conoy were allowed to establish a town near the present town of Washington Boro by the controlling Iroquois. Eventually, the Conoy migrated as far north as New York State in 1765. They settled a number of towns along the Susquehanna River in their northward movement, including Conoytown, at the mouth of the Conoy creek in Lancaster County, Harrisburg, Sunbury, Catawissa and Wyoming.

The Iroquois used the Conoy villages in Lancaster County as resting places on their raids against the Catawbias in the South. This undoubtedly allowed trade to take place between the two tribes. Also, the Conoys took part in a number of treaties and conferences with William Penn and, later Governor Hamilton. This fact is a possible explanation for the medals collected from a village site many years ago. See Plate I.

The beads and medals were part of a collection that was amassed early in this century. The beads are smaller in size and the facets more crude than those found at Conoytown. Apparently, they are from an earlier site to the South.

## Plate II

### ROW 1

BEAD NO.	DIAMETER (in mm.)	LENGTH (in mm.)	DESCRIPTION
1	10	11	Translucent/Light cobalt blue
2	10	9	Translucent/Light cobalt blue
3	10.5	8	Translucent/Light cobalt blue
4	9	9	Translucent/Blue green
5	10	9	Translucent/Blue green
6	10.5	10	Translucent/Blue green
7	10	9	Translucent/Red orange
8	10	10	Translucent/Red orange

### ROW 2

1	9.5	7	Translucent/Clear white
2	9	9.5	Translucent/Gray white
3	9	11	Translucent/Gray white
4	9	11	Translucent/Clear white



BEAD NO.	DIAMETER (in mm.)	LENGTH in mm.)	DESCRIPTION
5	11	10	Translucent/Gray white
6	11	10	Translucent/Gray white
7	10	10	Translucent/Cobalt blue
8	10	12	Translucent/Cobalt blue

Nos. 7 & 8 are 5 sided.

### ROW 3

1	9	6	Opaque/Black, yellow line
2	9	8.5	Opaque/Black, white line
3	11	8	Opaque/Black, white line
4	13.5	9	Opaque/Black, white line
5	11	9.5	Opaque/Black
6	10.5	10	Opaque/Black
7	10.5	8.5	Opaque/Black
8	9.5	8	Opaque/Black

### ROW 4

1	11.5	9.5	Translucent/Clear white
2	12	10	Translucent/Gray white
3	13.5	13	Translucent/Clear white
4	11	8.5	Translucent/Brown orange
5	10.5	9.5	Translucent/Red orange
6	11.5	8	Translucent/Light cobalt blue
7	14.5	11	Translucent/Cobalt blue

All crudely faceted.

### ROW 5

1	11	7	Translucent/Light cobalt blue
2	11.5	10	Translucent/Light cobalt blue
3	11.5	9	Translucent/Light cobalt blue
4	12	9	Translucent/Light cobalt blue



BEAD NO.	DIAMETER (in mm.)	LENGTH (in mm.)	DESCRIPTION
5	12	9	Translucent/Light cobalt blue
6	12	6	Translucent/Red orange
7	11.5	6	Translucent/Yellow orange

Nos. 1-5 are crudely faceted.

#### ROW 6

1	6	3.5	Opaque/Black
	7	5	
2	6.5	4	Opaque/Black
	8	5.5	
3	14	18	Opaque/Gray white
4	17	14	Opaque/Gray white
5	14.5	13	Translucent/Gray white
6	11	9	Opaque/Black
7	10	7	Opaque/Black

G. B. Fenstermaker — Editor  
N. C. Buckwalter — Assoc. Editor  
R. Lee Weaver — Photographer