

THE SAN XAVIER MISSIONS:
A Study in Historical Site Identification

by
KATHLEEN KIRK GILMORE

STATE BUILDING COMMISSION
ARCHEOLOGICAL PROGRAM

Report Number 16

March, 1969

thickness. They probably are fragments from wine bottles.

Light blue-green

No. of specimens: 15

Provenience: 9, Trench A, Feature 1; 2, Trench H,
Feature 1; 1, Trench E, Feature 1; 2, surface.

These are flat glass and bottle glass sherds. The thickness ranges from 0.2 cm. to 0.5 cm. Some sherds show faint lines of stress. One curved sherd, 0.2 to 0.3 cm. in thickness may have been blown in a pattern mold as faint stress lines and a molded line are visible on the convex surface.

Light lavender

No. of specimens: 8

Provenience: Trench A, Feature 1

These sherds vary in thickness from 0.15 cm. to 0.3 cm. One sherd may be a fragment of a bottle blown in a mold as one side joins another at right angles (Figure 9 J).

Clear uncolored

No. of specimens: 28

Provenience: Trench A, Feature 1

Some of these sherds are flat and some are rounded. One sherd has a molded pattern with part of a spherical etched or engraved design inside the larger molded area. The thickness of the sherds varies from 0.1 cm. to 0.3 cm.

Beads (Figure 9 A, B, C, D, E, F, H, I)

No. of specimens: 2782

Provenience: Burial, Trench B, Feature 1, 1; Burial,

Feature 4, Square N 121.2, W 76.9, 1469; Burial
 Feature 5, Square N 121.2, W 76.9, 1303; Burial,
 Feature 6, Square N 121.2, W 76.9, 6; Trench A
 Feature 1,4.

Twelve kinds of beads were distinguished in the sample. All except one are the hollow cane type of simple and compound construction. Beads made by this method are broken from a long thin cane of hollow glass and heat treated to smooth the ends. The simple beads are of one kind of glass and the compound beads have a central core of one kind of glass and an exterior layer of another kind. One bead is mandrel wound with pressed facets.

All but four beads were found with burials. Few beads are found at Spanish sites except in association with the Indian inhabitants. Apparently the Spanish used glass trade beads only as gifts to the Indians.

The following descriptions are modified from those of R. K. Harris, references being to his types as described in Bell *et al*, 1967: A Pilot Study of Wichita Indian Archeology and Ethno-history. References to Tunnell's styles are from Tunnell and Ambler, 1967: Archeological Excavations at Presidio San Agustin de Ahumada.

Style 1, 2 specimens (Figure 9H). Light blue, simple, surface rough because of numerous bubbles. Diameter (measured perpendicular to hole), 8 mm., length, 5 mm. (Harris, Type 10)

Style 2, 1 specimen. Description as for style 1 but smaller in size, 2 mm. to 4 mm. (Harris, Type 11; Tunnell, Style 2)

Style 3, 80 specimens. Description as for style 1, but smaller than style 1 or style 2, less than 2 mm. in diameter. (Harris, Type 155;

Tunnell, Style 3)

Style 4, 332 specimens. Light blue, simple, surface contains numerous bubbles, diameter, 2 mm. to 4 mm. (Harris, Type 46; Tunnell, Style 5)

Style 5, 23 specimens (Figure 9D). Clear, simple, diameter, average 3 mm., length, 2.5 mm. (Harris, Type 49; Tunnell, Style 17)

Style 6, 1 specimen. Dark blue, simple, diameter 2.5 mm. (Harris Type 48; Tunnell, Style 6)

Style 7, 1 specimen (Figure 9F). Dark blue, simple, few bubbles, diameter, 7 mm., length, 4 mm. Heavily patinated. (Harris, Type 77)

Style 8, 737 specimens (Figure 9C). White, compound, core glass contains more bubbles than the outer layer. Diameter, 3 mm. to 3.5 mm., length 2.5 to 3 mm. (Harris, Type 45; Tunnell, Styles 15, 16)

Style 9, 616 specimens (Figure 9A). Dark to light burgundy red, simple. Diameter 2.5 mm. to 3 mm. The darker beads appear black in ordinary light. (Harris, Type 50; Tunnell, Style 10)

Style 10, 465 specimens (Figure 9B). Red over green compound, diameter 2.5 mm. to 3.5 mm. These have been called "Cornaline d'Aleppo" after their major center of distribution in the Near East (Duffield and Jelks, 1961: 48). (Harris, Type 51; Tunnell, Style 13)

Style 11, 521 specimens (Figure 9E). Same as Style 10 except smaller in size, less than 2 mm. in diameter.

Style 12, 1 specimen (Figure 9I). Amber press facettted simple, diameter, 8 mm., length, 6 mm. (Similar to Harris, Type 40 except in color)

Provenience of bead styles:

	<u>Style</u>	<u>Number</u>
Burial, Trench B, Feature 1	1	1
Burial, N 121.2 W 76.9, Feature 4	3	80
	4	332
	5	23
	8	15
	9	30
	10	465
	11	521
	12	1
	(Bone beads)	(2)
Total Feature 4		1469
Burial, N 121.2 W 76.9 Feature 5	6	1
	8	716
	9	586
Total Feature 5		1303
Burial, N 121.2 W 76.9 Feature 6	8	6
Trench A, Feature 1	1	1
	2	1
	3	1
	7	1

Based on comparisons made with sites occupied in late eighteenth century, Tunnell (1967: 61) states that styles at Ahumada in common use during much of the eighteenth century were Style 2 (San Xavier, Style 2), Style 3 (San Xavier, Style 3), Style 5 (San Xavier, Style 4), Style 10 (San Xavier, Style 9), Style 13 (San Xavier, Style 10), Styles 15 and

16 (San Xavier, Style 8), and Style 17 (San Xavier, Style 5).

R. K. Harris (personal communication) commented that San Xavier Style 1 is most common in sites occupied from 1700 to 1740, and that the extra small bead, San Xavier Style 11, heretofore has been thought to be more common in the latter half of the eighteenth century.

Metal.

Iron

Knife

No. of specimens: 1 (Figure 10 I)

Provenience: Trench A, Feature 1

This fragment of a case knife has a broken tang 4.5 cm. in length. At the base of the tang, which is square in cross section, is a circular boss against which the handle abutted. This knife is similar to Type 2 case knife described by Harris *et al.*, (1965: 348) from the Womack site, an historic Indian site in Lamar County, Texas, which probably dates between 1700 and 1730.

Hooks

No. of Specimens: 5 (Figures 10, E, F, G, H)

Provenience: Trench A, Feature 1

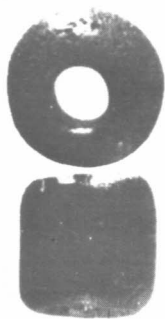
Four of these hooks, which are round in cross section may be *higos* or jinglers from horse trappings. All the hooks are plain with no design elements apparent. The two almost complete hooks are 0.4 cm. at the maximum width and taper to 0.2 cm. at the point. Lengths are 3.8 cm. and 5.1 cm. The other hook is flat in cross section, 0.4 cm. wide and 0.2 cm. thick. The length is 3.1 cm. It may have been some part of

Figure 9: Beads:

- A. Style 9
- B. Style 10
- C. Style 8
- D. Style 5
- E. Style 11
- F. Style 7
- G. Bone bead
- H. Style 1
- I. Style 12

All beads are enlarged six times.

Glass: J, K, L, M.



A



B



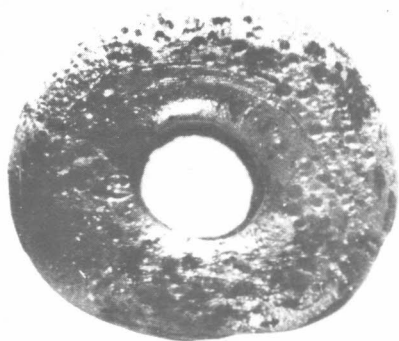
C



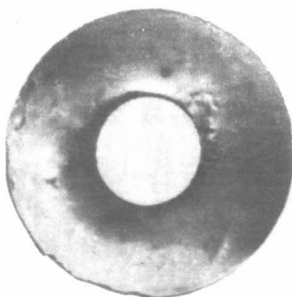
D



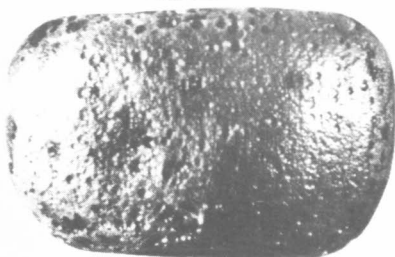
E



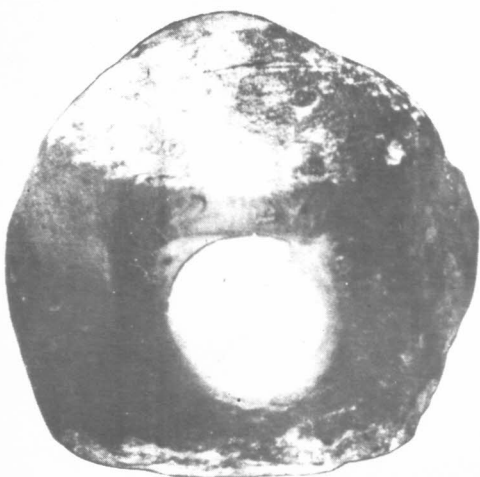
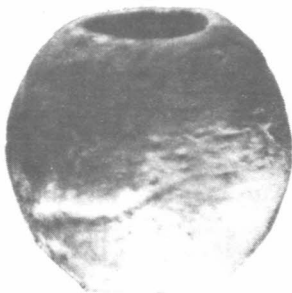
F



G



H



J

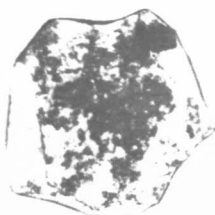


K

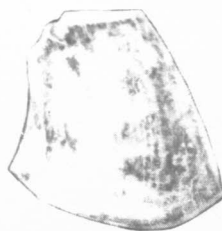


L

cm.



M



N