

A DESCRIPTION OF THE STRATIGRAPHY,  
FEATURES AND ARTIFACTS FROM AN ARCHEOLOGICAL  
EXCAVATION AT THE ALAMO

By  
John W. Greer

STATE BUILDING COMMISSION  
ARCHEOLOGICAL PROGRAM

AUSTIN

Report Number 3

March, 1967

## GLASS "KNOBS" (2 specimens, Fig. 20, c-d)

Description: These are elongated, slightly curved fragments of opaque black glass. They are cylindrical with rounded ends and are solid.

Dimensions: Length is at least  $1 \frac{1}{16}$  inches, diameter  $\frac{3}{8}$  inch.

## GLASS ORNAMENTS (2 specimens, Fig. 20, e-f)

Description: 1. One specimen is a pendant-shaped object of dark red color. It is very crudely triangular and is not drilled. It is probably early Spanish in age.

Dimensions:  $\frac{7}{32}$  inch long and wide and  $\frac{3}{32}$  inch thick.

2. Another specimen is a dark green, translucent glass drop, possibly for use in an earring or pendant pin. Probably late Anglo in age.

Dimensions:  $\frac{9}{16}$  inch long,  $\frac{5}{16}$  inch maximum diameter.

## MISCELLANEOUS CLEAR GLASS (13 specimens)

Description: These glass fragments are small pieces of dishes, bowls, jars, and ornamental objects. One fragment, possibly from a bottle, bears the impression "PUTNA"... "WH"....

## GLASS BEADS (9 specimens, Fig. 20, g-l)

Description: Type I. 4 specimens. Large white, opaque, barrel-shaped necklace beads. Compound construction, with an inner layer of white glass and an outer layer of clear glass with a slightly frosted surface. This type is probably the same as the compound Type 4 of Harris, et al. (1965: 309). These beads are 6 to 7 mm. in diameter and 4.4 to 5 mm. long. The ends of the beads are uneven.

Type II. 1 specimen. Harris (Harris, et al. 1965: 309) Type 10: "Large, Peacock Blue, opaque, barrel-shaped, necklace bead of simple construction. The glass has fine lines running length-wise the bead, giving it a texture reminiscent of stripped sugar-cane." The ends are fairly even and appear to have been cut and smoothed.

Dimensions: 7 mm. in diameter 6.5 mm. long.

Type III. 2 specimens. Same as Harris' Type 47: "Small, Gobelin Blue, opaque, donut-shaped garter bead of simple construction. The glass has a porcelain-like texture." This blue is a slightly darker hue than the Peacock Blue of the Type II beads above. Beads of this size are usually referred to as "seed beads."

Dimensions: Diameter 2.7 mm.; length 1.9 to 2.0 mm.

Type IV. 1 specimen. Large, compound bead with clear glass exterior around a small, dark green, translucent glass core. Apparently, the larger clear glass portion of the bead was made around a smaller green bead.

Dimensions: The clear part of the bead is 4.7 to 6.3 mm. long and 8.4 mm. in diameter. The small green part of the bead is 3.3 mm. in diameter and about 2 mm. long.

Type V. 1 specimen. This is a small, uneven ring of very dark grayish brown or black glass 11 mm. in diameter. The walls are 1.9 to 2.8 mm. thick, leaving a large central opening.

#### MARBLES (2 specimens, Fig. 20, m-n)

Description: One modern type glass marble has mixed colors of blue and white. It is 5/8 inch in diameter. The second marble is either porcelain or a ground stone such as marble. It is white and comes from the early Spanish deposits. This specimen is 11/16 inch (18 mm.) in diameter.

### Plastic and Rubber

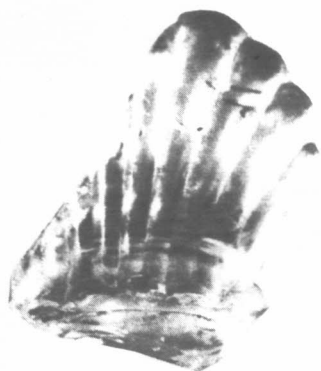
#### Plastic combs (2 specimens)

Description: Two comb fragments were recovered.

#### Rubber disc (1 specimen)

Description: This is a small disc of very hard (vulcanized) rubber with a fine hole in the center. Use is unknown.

Fig. 20. Glass beads: g - l.



a



b



c



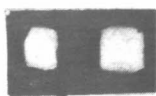
d



e

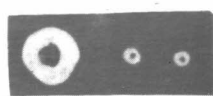


f



g

h



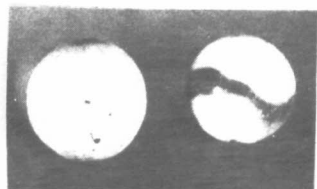
i

j

k



l



m

n

