

357.

EIGHT ARCHAEOLOGICAL SITES IN THE WEBBER'S FALLS  
LOCK AND DAM AREA, OKLAHOMA  
BY  
FRED SCHNEIDER *a*

ARCHAEOLOGY IN THE WEBBER'S FALLS LOCK AND DAM AREA:  
A BRIEF SUMMARY  
BY  
DON G. WYCKOFF *a*

*P*  
*'8041*

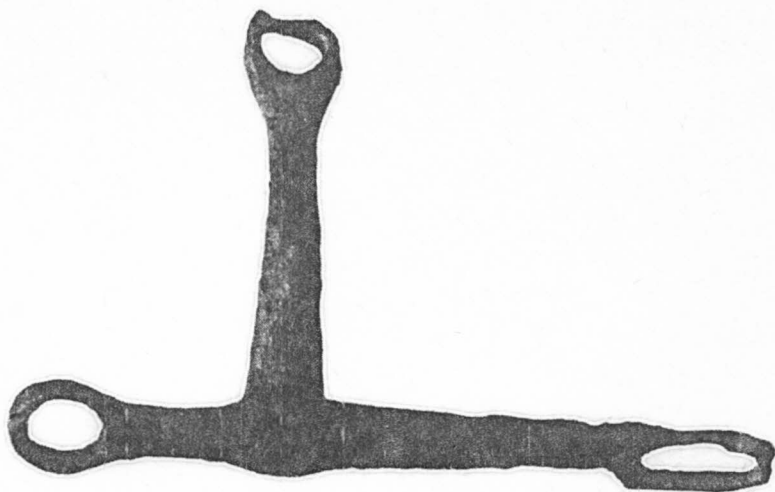
ARCHAEOLOGICAL SITE REPORT NO. 7  
OKLAHOMA RIVER BASIN SURVEY PROJECT  
UNIVERSITY OF OKLAHOMA RESEARCH INSTITUTE  
NORMAN, OKLAHOMA

1967

LIBRARY  
NATIONAL MUSEUM  
OF CANADA



1



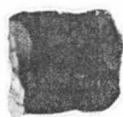
2



3



4



5



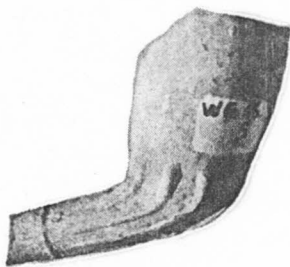
6



7



8



9



10



11



12

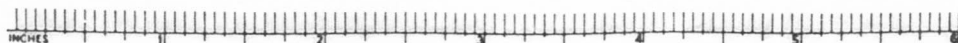


Plate XXII. Wg-16, Vandever-Haworth Site artifacts: No. 1, Flintlock cock; No. 2, Bridle bit; No. 3, Cast button; No. 4, Two-piece button; No. 5, Gun flint; Nos. 6 through 8, Beads; Nos. 9 through 12, Kaolin pipe bowls.

## STAPLE

Number of specimens: 1.

Comment: This is not a true staple, but it is a long nail which has a right angle bend at each end. The central shaft is 6.8 cm. long while both ends are 4.4 cm. long.

## TACK

Number of specimens: 1.

Comment: This is a section from the distal end of a pair of blacksmith tongs. This section shows that the blade is 4.8 cm. long and 2.5 cm. wide.

## WAGON PART

Number of specimens: 1.

Comment: This is a broken metal strap which measures 13.2 cm. in length, 3.7 cm. in width, and .7 cm. in thickness. At one end there is a hole with a diameter of 1.6 cm. This object may have served as an attachment between a doubletree and a wagon.

## WEDGE (Plate XXIII; No. 2)

Number of specimens: 1.

Comment: This object has a "T-shaped" outline. Each of the tangs tapers to a point, and their total length is 13.4 cm. The bevelled working edge is at the base of the "T" and is 5.2 cm. wide. Its thickness is 1.3 cm.

## Personal Items

## BEADS (Plate XXII; Nos. 6 through 8)

Number of specimens: 6.

Dimensions: .7 x .7 cm.

Comment: These are large blue beads which are hexagonal and faceted. Five of the specimens are of simple construction and correspond to Number 130 on a bead chart constructed by R. K. Harris of Dallas, Texas. One bead is of compound construction and corresponds to Number 129 on the Harris Bead Chart. These beads come into trade in small numbers about 1815 and are found in large numbers at the Devil's Canyon site, dated around 1834 (R. K. Harris, personal communication).

## BUCKLES (Plate XXIV; Nos. 3 and 4)

Number of specimens: 2.

Dimensions: These specimens vary in size (length-width) from 2.9 x 2.1 cm. to 4.0 x 2.5 cm.

Comment: Both of these specimens have rectangular outlines.

## BULLETS

Number of specimens: 2.

Comment: Both of these specimens are grooved; one is .22 caliber while the other is either .32 or .38 caliber. These bullets apparently