

NATIONAL HISTORIC PARKS
AND SITES BRANCH

397
DIRECTION DES LIEUX ET DES
PARCS HISTORIQUES NATIONAUX

MANUSCRIPT REPORT NUMBER 280
TRAVAIL INÉDIT NUMÉRO 280

THE HISTORY AND ARCHAEOLOGY OF A NORTH WEST COMPANY
TRADING POST AND A HUDSON'S BAY COMPANY TRANSPORT
DEPOT, LAC LA LOCHE, SASKATCHEWAN

by

DONALD N. STEER

NWCo. post (ca. 1787-91)

HBCo. depot (ca. 1874-86)

(1977)

PARKS CANADA
DEPARTMENT OF INDIAN
AND NORTHERN AFFAIRS

PARCS CANADA
MINISTÈRE DES AFFAIRES
INDIENNES ET DU NORD

Buttons. Five mother-of-pearl buttons (Fig. 33 f-j) and one bone button (Fig. 33e) were recovered. The bone button is incomplete but measures 17.6 mm in diameter. The front and back of the disc are flat with rounded edges on the face. The centre, which has four holes, is recessed.

The mother-of-pearl buttons are flat and have centre recesses either with two holes or four holes. They range in diameter from 9.7 to 14.3 mm.

The well-made appearance of the bone and shell buttons indicates that they were probably not made on-site.

Beads. One hundred and fifty-one classifiable glass beads were recovered from the site of which 12 distinct types are represented. In most cases, they were found in concentrations between floor boards.

To be consistent with more recent studies, the La Loche House beads have been classified according to the Kidds (Kidd and Kidd 1970), a classification founded on processes of manufacture and upon physical attributes, including shape, size, translucency and colour. Two principal methods of bead manufacture are noted, (1) drawn and (2) wound,

(1) by drawing out a bubble of molten and viscid glass into a long, slender tube, and (2) by winding threads of molten glass around a wire which is later withdrawn. A third method probably often used in conjunction with each of the above, is by molding the beads in two-part

molds while the glass is still viscid (Kidd and Kidd 1970: 48).

Both tube and wire-wound manufactured beads are represented among the La Loche House specimens.

The following description of each La Loche House bead type includes the Kidd identifying code, followed by shape, size, translucency, colour and condition of the ends. A short definition of each of the above attributes is given.

Examples of the identifying code are Ia (Drawn, tubular, monochrome beads) and WIb (wound, round beads). A second numerical digit following the code, e.g., WIb1, indicates the bead type number already assigned by the Kidds. All but four of the La Loche House beads could be linked to a bead type number assigned by the Kidds. In the case of these four beads, the type number is followed by an asterisk (*), e.g., WIC*.

Included under shape are tubular beads (round cross-sections), circular beads (ring-shaped), round beads (either spheroidal, oblate or barrel-shaped), oval beads, and flat beads (oval or round specimens pressed flat). Flat specimens are not represented in the La Loche House collection. Tubular beads are separated from circular beads by the criterion that the length of the former is greater than the diameter. Specimens with a diameter equal to or greater than their length are classed as circular.

The glass quality or translucency of the beads is described employing the terms opaque, transparent (clear)

and translucent. Opaque glass is impervious to direct light except on the thinnest edges. Objects observed through clear beads are distinctly visible. Translucent beads allow light to pass through, yet diffuse light so objects observed through them are indistinct.

The following size categories are provided by the Kidds: very small, under 2 mm; small, 2-4 mm, medium, 4-6 mm; large, 6-10 mm; very large, over 10 mm. These size groupings refer to the diameter of the bead. When several specimens of a specific type are represented, a diameter range is given. Also included is a length range for each bead type.

Colours are designated using the names and codes in the Color Harmony Manual (Jacobson, et. al. 1948). Also included are colour code equivalencies found in the Munsell Book of Color (Munsell Color Company 1960). An example would read bright navy (13 pg; 7.5PB 3/4).

In the case of drawn beads, ends may be broken or rounded. The later are formed by subsequent reheating and agitation of the beads in a metal drum or pan (Karklins n.d.).

Drawn Beads. Ia4 Tubular; small size; translucent; oyster white (b; N 9/0); 9 specimens; ends range from broken (unaltered) to well-rounded (Fig. 33q, u).

Ia19 Tubular; small size; translucent; brite navy (13 pg; 7.5PB 3/4); 1 specimen; ends rounded (Fig. 33r).

IIa12 Circular; small size; translucent; oyster white (b; N 9/0); 39 specimens (Fig. 33u).

Diameter Range - 2.5 to 4.0 mm Length range - 2.0 to 4.0 mm.

IIa14 Circular; small and medium sizes; opaque, white (a; N 10/0); 9 specimens (Fig. 33u, t).

Diameter range - 2.5 to 5.5 mm Length range - 1.5 to 3.5 mm.

IIa* Circular; small size; translucent; bright blue (16 1c; 5B 5/7); 86 specimens (Fig. 33u).

Diameter range - 2.5 to 3.5 mm Length range - 1.5 to 3.0 mm.

IIIa* Facetted six-sided bead (facets calibrated around mid-section); large size; layered; clear outer layer; translucent oyster white (b; N 9/0) core; 1 specimen (Fig. 331).

Diameter - 7.5 mm Length - 6.5 mm

IVa6 Circular; large size; opaque redwood (6 1e; 7.5 R 5/6) outer layer; transparent apple green (23 ic; 10GY 6/6) core; 1 specimen (Fig. 33p).

Diameter - 6.5 mm Length - 4.0 mm

IVa9 Circular; medium size; clear scarlet (7 pa; 5R 4/14) outer layer; opaque white (a; N 10/0) core; 1 specimen (Fig. 33s).

Diameter - 5.0 mm Length - 3.0 mm

Wound Beads. Wib2 Round; large size; opaque (fire burnt); white (a; N 10/0); 1 specimen (Fig. 33n).

Diameter - 5.0 mm Length - 8.0 mm

W1b* Round; large size; opaque; light blue (?); 1 specimen
(Fig. 33k).

Diameter - 10.0 mm Length - 7.0 mm

W1c1 Oval; large size; opaque; white (a; N 10/0); 1
specimen (Fig. 33m).

Diameter - 6.5 mm Length - 10.0 mm

W1c* Oval; large size; opaque (fire burnt); possibly
turquoise (?); 1 specimen (Fig. 33m).

Diameter - 5.5 mm Length - 9.5 mm

One large size brass bead is among the La Loche House
bead collection (Fig. 33d). The bead is circular with a
diameter of 7.0 mm and a length of 6.0 mm.

The two most common bead types are small, circular,
translucent brite blue drawn beads, and small, circular,
translucent oyster white drawn beads. Both types are common
on most western Canadian fur trade sites of the late 18th
and early 19th centuries.

Recreation

Clay Smoking Pipes. Only 9 clay smoking pipe fragments, 4
bowl and 5 stem pieces, were recovered (Fig. 33a-d). Only
one bowl fragment is diagnostic (Fig. 33a). This fragment
possesses a D stamped on the side of the bowl facing the
smoker. The mark is encircled by a rope-like cartouche.
The D is probably part of a common, stamped TD monogram
found on many fur trade sites of the period. The general

Pen Nib. An iron pen nib component was found (Fig. 79b). The component has a maximum length of 25 mm and is marked J MITCHELL....

Clothing and Personal Adornment

Buckle. An iron buckle, probably for attachment to braces, was recovered (Fig. 79d). The artifact consists of two components and is painted black.

Tinkle cone. A small copper tinkle was found (Fig. 79c). The specimen measures 20 mm in length.

Buttons. Five buttons were recovered. One button (Fig. 78a) is made of brass, and is of one-piece manufacture. The specimen has four-holes in a recessed centre. Seven stars are found in relief on the face. The second button is of three-piece manufacture (Fig. 78b), with iron, brass and lead components. No markings are present. The third specimen also has three components (Fig. 78c). The materials are iron and brass. The button is marked in relief on the face, R. SHOREY & CO.*MONTREAL*. The fourth specimen is an unmarked three-piece iron, brass and lead button (Fig. 78d). The fifth button is a very plain two-hole mother-of-pearl specimen (Fig. 78e).

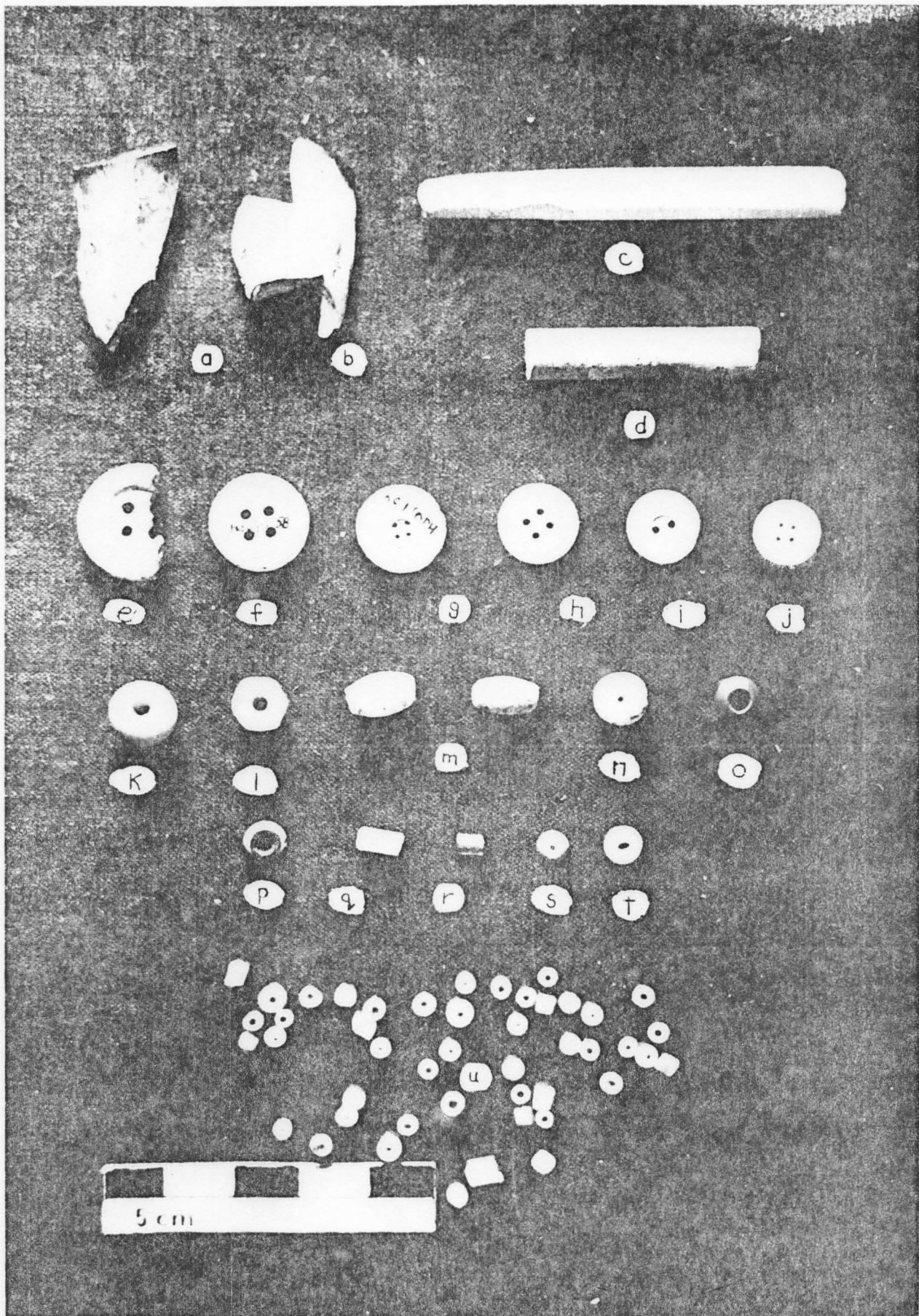
Beads. Beads from the site are all small drawn trade beads, of which 65 specimens are represented. They are classified similarly to those from the La Loche House site, that is, according to the scheme of the Kidds (1970).

- Ia4 Tubular; small size; translucent; oyster white (b; N 9/0); 8 specimens; ends range from broken (unaltered) to well-rounded (Fig. 78g).
Diameter range - 2.5 to 3.0 mm Length range - 3.0 to 3.5 mm
- IIa12 Circular; small size; translucent; oyster white (b; N 9/0); 37 specimens (Fig. 78g, h).
Diameter range - 2.5 to 3.0 mm Length range - 2.0 to 3.0 mm
- IIa* Circular; small size; translucent; bright blue (16 1c; 5B 5/7); 18 specimens (Fig. 78f).
Diameter range - 2.5 to 3.0 mm Length range - 1.5 to 3.0 mm
- IVa9 Circular; small size; clear scarlet (7 pa; 5R 4/14) outer layer; opaque white (a; N 10/0) core; 2 specimens (Fig. 78i).
Diameter - 4.0 mm Length - 2.5 mm

Recreation

Clay Smoking Pipes. Twenty-one clay pipe fragments were recovered from the depot site excavations (Fig. 80). Seventeen of the specimens are stem fragments, and 4 are bowl fragments. Two bowl fragments show the initials IF, in relief, on the sides of their heels. IF pipes have been recovered by the writer at two Hudson's Bay Company Rocky Mountain House sites dating to 1835-61 and 1865-75, respectively.

- 33 Clay pipes, buttons and beads, La Loche House.
- a,b Clay pipe bowl fragments, TD mark (HdOj-1-216; HdOj-1-200).
- c,d Clay pipe stem fragments (HdOj-1-85; HdOj-1-123).
- e Four hole bone button (HdOj-1-57).
- f-j Mother-of-pearl buttons (HdOj-1-58 to 62).
- k Wound bead - round; large size; opaque light blue (?).
- l Drawn bead - faceted; large size; clear colourless outer layer; translucent oyster white core.
- m Wound beads - (left) oval; large size; opaque; white.
- (right) oval; large size; opaque; turquoise (?).
- n Wound bead - round; large size; opaque; white.
- o Brass bead.
- p Drawn bead - circular; large size; opaque redwood outer layer; transparent apple green core.
- p Drawn bead - tubular; small size; translucent; oyster white.
- r Drawn bead - tubular; small size; translucent; bright navy.
- s Drawn bead - circular; medium size; clear scarlet outer layer; opaque white core.
- t Drawn bead - circular; medium size; opaque, white.
- u Drawn beads - tubular and circular; oyster white and bright blue.



78 Buttons and beads, Transport Depot.

- a Button, one-piece, brass, four-hole, seven stars in relief on face (HdOk-1-252).
- b Button, three-piece, iron, brass and lead (HdOk-1-115).
- c Button, three-piece, iron and brass, maker's mark - R. SHOREY & CO.* MONTREAL* (HdOk-1-593).
- d Button, three-piece, iron, brass and lead (HdOk-1-254).
- e Button, mother-of-pearl, two-hole (HdOk-1-184).
- f Drawn beads - circular, small size, bright blue.
- g Drawn beads - tubular and circular, small size, oyster white.
- h Drawn beads - circular, small size, oyster white.
- i Drawn beads - circular, small size, clear scarlet outer layer, opaque white core.



a



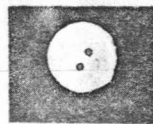
b



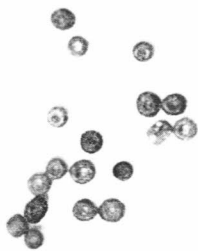
c



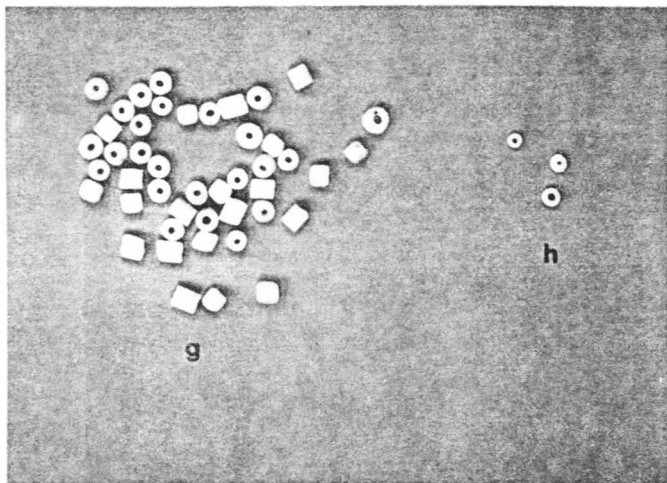
d



e



f



g



h



i

