

SMITHSONIAN INSTITUTION
BUREAU OF AMERICAN ETHNOLOGY
BULLETIN 166

Inter-Agency Archeological Salvage Program

RIVER BASIN SURVEYS PAPERS

No. 8.—EXCAVATIONS IN THE McNARY RESERVOIR
BASIN NEAR UMATILLA, OREGON, by
DOUGLAS OSBORNE

WITH APPENDIXES

By MARSHALL T. NEWMAN, ARTHUR WOODWARD, W. J. KROLL
and B. H. McLEOD



UNITED STATES
GOVERNMENT PRINTING OFFICE
WASHINGTON : 1957

For sale by the Superintendent of Documents, U. S. Government Printing Office
Washington 25, D. C. Price \$1.75 (paper cover)

035585

LIBRARY
NATIONAL MUSEUM
OF CANADA

APPENDIX²

REPORT ON TRADE GOODS

By ARTHUR WOODWARD

Los Angeles County Museum, Los Angeles, Calif.

Beads.—In general all of the beads submitted fall within the same period, i. e., the 1790's to the 1830's. Beads of a similar type have been found in the Yokuts Indian cemetery at Elk Hills, Kern County, Calif. The small white and blue beads from McNary fall into the same category as those from burials G-60 A from Elk Hills dating around 1806-21. The small blue, barrel-shaped bead (pl. 29, *a*, 1) at the end of the strand 45 BN 3/727 should fall a trifle earlier, say around the 1790's to 1800. However, there were lags in certain types of beads, hence this particular style bead may well have carried over into the 19th century. The larger blue glass beads may well fall within the 1820's, 1830's, and even later into the 1850's.

The large flat glass bead (pl. 29, *a*, 8) is one which I have not encountered and until I can get more corroborative evidence I would hesitate to date it. My feeling is that it falls within the period 1810-30.¹

Flint lock hammer.—This is a portion of a lock used on a hunting rifle, not military. It may be English or American ca. 1780-1810. (Pl. 31, 30.)

Iron blade.—This is listed 473, knife blade. It may well have been used as a knife blade, but it appears to be the broken tip of a sword reworked as a knife. The date is uncertain. (Pl. 31, 27.)

Buttons.—The large flat brass button with a stamped design on the surface (pl. 32, *b*, 9) is of a type which I would catalog as the omega or O-type button following D. F. Johnson's description, or possibly late A-type. In this instance the button was machine stamped (hand machine) and the face apparently die punched. I would say it was probably late 18th century, about 1790-1800 or perhaps even a trifle later. The other two buttons (pl. 32, *b*, 6, 11) are of the trombac or T-type and although these came in during the latter half of the 18th century, certain ones have been known to persist as late as 1830. Apparently these buttons are of the metal known as white copper (arsenic added to the brass gave it a pseudo silver appearance). Again the dates for these two buttons would probably be 1790-1810.

¹ See Osborne's observation on this item (p. 98).

Buttons numbered 45 BN 3/111, 45 BN 3/697 and 148 (pl. 32, *b*, 8, 10), as well as the thin specimen 138 which does not seem to be a button at all, may have been part of a cheap whistle.

The buttons may date from late 18th century; on the other hand many buttons of this sort continued to be sold to Indians long after the close of the 18th century. Hence, in a sense, the period of manufacture need not correspond with the period of distribution. The same comment holds true for the Chinese porcelain pendant.

Porcelain pendant.—According to Gregor Norman Wilcox, of the museum staff, who has specialized in ceramics, the fragment is late 17th century Ming.

Musket ball.—Weight about one-half ounce, from a rifle or musket of .51 or .52 caliber. No further data given. (Pl. 30, 11.)

PLATE 24

Shell and shell beads, 45-BN-3. *a*, Shells: 1, *Olivella biplicata* (B44/646); 2, *Olivella biplicata*, small (B22/463); 3, 4, disk beads (B46/670; 334); 5, disk bead (dark) (364); 6, *Dentalium* ? (B42/671); 7, *Dentalium pretiosum* (B50/403); 8, *Dentalium pretiosum* (754); 9, *Glycymeris subobsoleta* (B7/261); 10, *Dentalium pretiosum* (B22/462); 11, disk bead (365); 12, *Haliotis kamchatkana* pendant (322); 13, *Haliotis kamchatkana* pendant (B7/244); 14, *Haliotis kamchatkana* pendant (B4/88); 15, mussel shell ? (B12/305); 16, unio of pelecypod (B34/558); 17, *Haliotis kamchatkana* (B7/260); 18, *Juniperus occidentalis* beads (seeds) (B18/555). *b*, Shell beads: 1 (lower center), *Olivella biplicata* (B22/463); 2 (upper right), *Dentalium pretiosum* (B50/403); 3 (center), *Dentalium pretiosum* (B50/403); 4 (upper center), dentalia disks, *Dentalium pretiosum* (754); 5 (second from upper left), copper tube bead and disk (100), 3 cm. long; 6, (middle left), disk beads (B42/671); 7 (right) seed beads, *Juniperus occidentalis* (B18/555); 8 (lower left), disk bead (334); 9 (upper left), *Dentalium*? (B42/671).

PLATE 25

Perishable materials. *a*, 45-BN-3, *Dentalium* headband of burial 22 (enlargement of field photograph (B22/462)); *b*, 45-BN-53, twined rush matting (HP11/34); *c*, 45-BN-3, coiled basket fragment (B36/624).

PLATE 26

Hafted blades, 45-BN-3. *a*, Hafted blade, Type I k (B36/609); *b*, hafted blade, Type I ke (B25/518); *c*, hafted blade, Type I k (B26/501).

PLATE 27

45-BN-3. *a*. Twined basketry hat (enlargement of field negative; (B36/615)); *b*, twined mat fragment (B53/796).

PLATE 28

45-BN-3. *a*, Copper beads and cordage: 1 (724 (1)); 2, (746 (41)); 3, (724 (44)); 4, (724 (51)); 5, cord only (66); 6, (724 (14)); 7, (724 (24)); 8, (154b); 9, cord only (44). *b*, *Apocynum* cordage: 1, three-strand braid (750 (28)); 2, fine cord in seed bead; two-ply S-twist, diameter 2 mm. (B23/637); 3, spliced piece of cord, two-ply Z-twist, 5 cm. long (cord from 732); 4, most usual type of cord, two-ply, S-twist (cord from 735); 5, heavy cord, two-ply S-twist; each single two-ply Z-twist with singles of S-twist (cord from 732 (19)); 6, cordage, two-ply, Z-twist (cord from 724 (9)).

PLATE 29

45-BN-3. *a*, glass trade beads: 1, (727); 2, (748); 3, (49); 4, (755); 5, (763); 6, (765); 7, (427); 8, butterfly bead (B46/670); 9, (767); 10, (751); 11, (757); 12, (761). *b*, Brass and copper objects: 1, brass thimble (B15/345); 2, copper pendant (434); 3, copper pendant (B15/346); 4, hollow brass hemisphere, sawed and perforated, has appearance of part of brass saddle pommel (389); 5, ring and glass beads (740); 6, strip ring (384); 7, copper tinkler (327); 8, brass pendant (483); 9, initial stage of manufacture of brass tube bead 6.8 cm. long, 3.7 cm. wide, of 20 gage hard-tempered rolled brass. Bead was rolled and hammered on an anvil over a form, presumably a round stick or an arrow shaft. Anvil marks can be seen on the under side of the roll. Abrasive marks of a striker or punch of some type can be seen on the edge of tube lip just before it

was tucked and rolled (318a); 10, hawk bell? (277); 11, brass musket butt plate (11 gage Brown and Sharpe), holes square-cut with metal chisel (356); 12, brass pendant, two rivets; ear of kettle? (B12-14/309); 13, pendant?, 19 gage—2 pound copper (Stub's gage) (407); 14, flattened coil copper wire (508); 15, pendant ? (B46/669); 16, copper pin (218); 17, pendant ?, 14 gage (Brown and Sharpe) sheet brass; square chisel cut holes (82); 18, flattened copper wire (724 (62)); 19, brass tube bead, 17 gage, rolled and pounded over form (759); 20, spoon or fork handle (65); 21, copper bead, shell bead and cord (see also pl. 24, b, 5) (100); 22, beads of sheet copper and brass (750).

PLATE 30

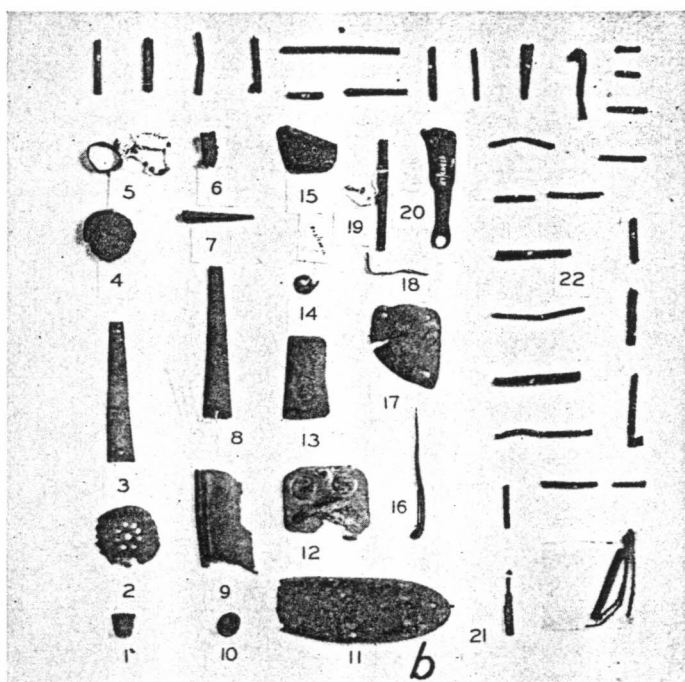
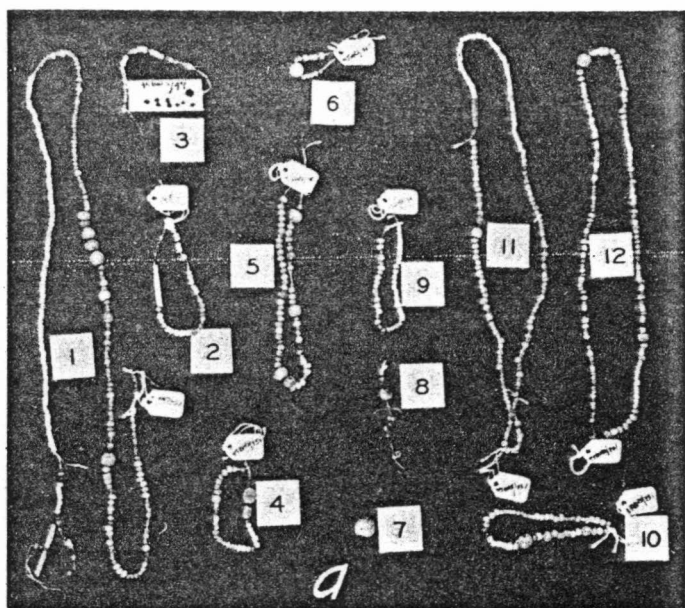
Brass and copper trade artifacts, 45-BN-3. 1, brass pendant, weight 2 ounces (52); 2, copper pendant, weight 2 ounces (691); 3, copper pendant (292); 4, copper hammered, bar pendant, shape is that of double-bladed celt (B26/554); 5, brass pendant (B26/554); 6, 7, copper pendants with deep central boss (470, 426); 8, copper pendant, corrugated (425); 9, copper pendant, two corrugations (320); 10, embossed copper button ?, single central perforation (286); 11, musket ball, lead, about .50 caliber (633); 12, copper pendant (137); 13, copper pendant, punched decorations (332); 14, brass pendant cut and smoothed (207); 15, copper pendant, suspension hole formed by pounding, bending and overlapping parts of one end (B49/681); 16, copper pendant (410); 17, brass pendant; upper right corner is crimped over with a fragment of shell in the fold. The right-hand edge is rough and slightly bent, but the other three edges are ground down and smoothed. A bead has been glued or pressed into the fold to provide a hole for suspension (146); 18, copper button ? fragment (138); 19, copper pendant (287); 20, copper tube bead (156); 21, copper tube ring (102); 22, 23, 24, 25, 26, 27, 28, 29, 30, 31, 32, copper tube beads (145, 68, 735, 766, 213, 746 (10), 117, 746 (26), B12-14/371, 110, 724 (11)); 33, copper tube bead, corrugated before rolling (157); 34, copper tube bead, appears purposely crushed, broken, and bent (746 (7)); 35, this bead has been destroyed by four crimps or dents (746 (4)); 36, copper scrap (746 (84)); 37, copper tube bead fragment (746 (80)); 38, copper tube bead apparently deliberately crushed and destroyed, possibly "killed" and deposited at grave (746 (33)); 39, copper tube bead (89); 40, copper tube bead, crushed (746 (29)); 41, copper tube bead with folded lip, crimped and bent (118); 42, copper tube bead destroyed (728); 43, copper tube bead, four dents across bead, destroyed (724 (1)); 44, copper tube bead (746 (34)).

PLATE 31

Ironware, 45-BN-3. See section entitled "Iron Objects," p. 98 seq.

PLATE 32

45-BN-3. a, Ironware: 1, knife with seed beads adhering (B23/637); 2, bone core and iron case (pipestem?) (B25/707); 3, arrowpoint (B25/540); 4, arrowpoint (B25/540); 5, pipestem (B38/563). b, Sheet brass, copper and buttons: 1, left, 20 gage factory rolled brass; edges show cutting and breaking (288b); right, copper, possibly a flattened piece of kettle (318b); 2, silver fragment, perforated, curvilinear design impressed (409); 3, brass button; this type is the old colonial model of military button with the heavy eyelet and welded collar around base of the eyelet (149); 4, copper bead with glass bead on *Apocynum* cord (127); 5, pewter pendant (58c); 6, another pre-1800 colonial military-type



Trade goods; 45-BN-3.
(For explanation, see pp. 248-249.)