

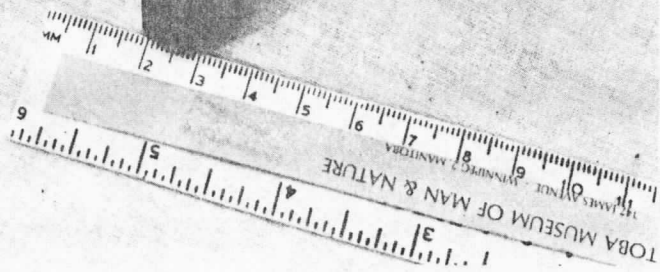
# PINE FORT

779

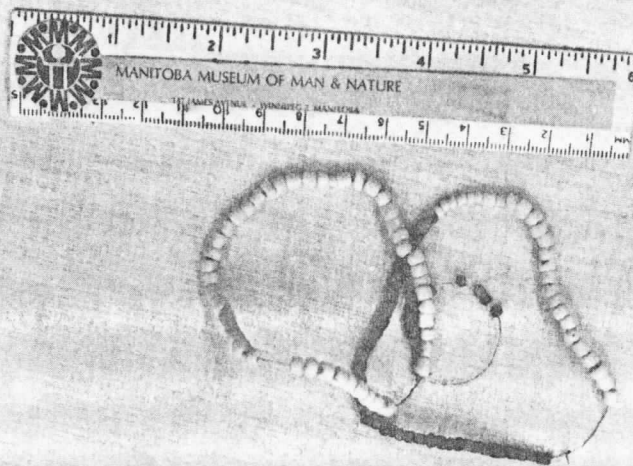


**NORTH WEST  
COMPANY  
POST  
h.mackie  
1972**

**A PRELIMINARY REPORT**



Calumet bowl fragment



Beads

said that he deliberately tilled the site area extra deep in an attempt to bring up Indian artifacts. Attempts must be made to locate as much of the collected material as possible.

Surface collecting has not only altered the artifact yield and distribution but can also affect the typology. Collectors have often recognized and thus sought only specific types of artifacts. It is expected that what has been picked up from the site has been in the way of native manufacture; namely lithics and larger items of European manufacture. Small items of European manufacture such as beads, have for the most part been overlooked.

The variety of artifacts uncovered in the 1972 excavations were quite limited. Beads were numerous, especially blue and white seed beads common to North West Company sites circa 1800 (Plate VIII). The half dozen other varieties found are all common to North West Company sites as well but usually occur in much greater numbers and in greater varieties. The common seed bead, is also slightly different in that the white beads are slightly larger than those usually found. What does this all mean? Does the lack of variety indicate an occupation of short duration? What does this offsize seed bead indicate? Possible poor quality control on the part of the manufacturer or that the occupation represents a period sometime prior to 1790 or post 1810. White seed beads uncovered at the Fort Riviere Tremblante

site excavated by the writer in 1967 and 1968 are of a smaller variety and yet it is known from documentation that in 1793 trade goods destined for Tremblante came through Pine Fort. Buttons, so often found in number and variety have not met either criteria at this site. Again there must be some explanation for this. An artifact analysis and related research should prove quite meaningful, if and when carried out.

The whole matter of artifact research and distribution is a matter among other aspects which is usually dealt with through the winter months. At present there is no positions or funds available to follow through with such research.

### Tourism

A second aspect of this project was to share and inform local residents, passerbys and tourists visiting Spruce Woods Park of the wealth of local history in the area. While this history and the excavations in particular meant different things to different people, the majority had the opportunity to observe for the first itme, the field results of an archaeological excavation. The learnings gleaned from this latter experience should help the overall cause of preservation and proper research of that rapidly vanishing unrenewable resource, namely undocumented prehistoric and historic sites.