
SMITHSONIAN INSTITUTION
Bureau of American Ethnology
Bulletin 185

River Basin Surveys Papers, No. 27
Star Village: A Fortified Historic Arikara Site in Mercer County,
North Dakota
By GEORGE METCALF

by placing irregularly shaped pieces of sheet iron over small holes where they were pinned with narrow strips of sheet iron. These improvised rivets were simply pushed through slits, the ends bent sharply and both patch and rivets pounded. Both sides of the object are heavily soot-encrusted.

A thin piece of sheet iron, circular in outline, measures between 16.5 and 17.0 cm. in diameter. It appears to have been the bottom of a small bucket of about 1 gallon capacity.

A musket ball badly deformed by impact came from Feature 1. In its deformed state it measures about .60 caliber.

A strip of brass 3 mm. wide has been bent until the ends overlapped, forming a ring 1.65 cm. in diameter. It may have served as a finger ring or hair ornament.

Two pieces of thin sheet zinc came from the site. One, from Feature 8, measures 3.3 cm. in maximum length, with a width varying from 1.0 to 1.3 cm. Three edges have been cut, the other broken. It does not appear to be part of a tool or ornament, and its shape suggests that it is a scrap or trimming discarded during the manufacture of some other object. A semicircular fragment of zinc from Feature 1 is 2.0 cm. in width, and the outer edge is turned over evenly to form a narrow flange 4 mm. in height. The inner margin is generally serrated, but in a few places the metal extends past the average width and the serrations become small, closely spaced punctates. The object may be part of the lid of a small container, the central part of which was outlined by a circle of small punctates.

Glass and earthenware trade objects.—Four of the thirteen glass fragments from the site came from Feature 3. Two of them found in the fireplace and partially melted represent part of the mouth and neck and a fragment of the side and base of a clear glass bottle. An unfused fragment from the floor is fluted, and all may be parts of the same bottle. The fluted fragment has been identified as being from a bottle of the type known as a pocket flask.

A 2.0 mm. thick fragment of clear, flat glass came from Feature 5. One edge has been smoothed by grinding. It may be a mirror fragment. From the fireplace at the same house came an irregularly shaped fragment of dark greenish glass. It is 5 mm. in thickness, curved, and probably a bottle fragment.

The remainder of the glass fragments came from Feature 8. Two sherds from the floor are of the same dark-greenish bottle glass that came from Feature 5, one suggesting by its marked curvature that it formed part of a bottle neck. The other is the bottom of a pocket flask identified as dating about 1840–1860 (pl., 12, *a*). Five glass fragments from the fireplace do not show heat effects. All are of clear glass and represent two bottles. Two fragments are from the mouth and neck of a small medicine bottle, the mouth of which

is finished with a flange (pl. 12, *f*). The other three fragments are curved and in size and shape suggest fragments from a modern beer bottle of clear glass.

From Feature 8 also came a single sherd of glazed earthenware the contours of which suggest that it came from a cup or small bowl. This sherd has been identified as Staffordshire white ware, with rather coarse paste. The white glazed exterior is decorated with a pale-blue glazed band 1.0 cm. in width and placed between narrower bands of black glaze (pl. 12, *e*).

A button of milk glass, 1.4 cm. in diameter and 3 mm. in thickness came from Feature 10. The underside is convex, the depressed center of the upper surface is surrounded by a band 3 mm. in width, beveled toward the edge. There are four centrally located perforations (pl. 12, *b*.)

Six fragmentary dull-white glass trade beads came from Feature 1. Two showed lengths of 8 mm. and were 9 mm. in diameter. One showed a length slightly greater than the width. The perforations were about 1.5 mm. in diameter (pl. 12, *c, d*).

From Feature 3 came a single dull-blue glass seed bead 3 mm. in width and thickness. Another bead of the same size and shape but black in color came from Feature 10. A dull-blue seed bead, size O, from Feature 1, and another from Feature 3 are much smaller, and a dull-white bead from Feature 3 is larger than the preceding beads. From Feature 3 also came 94 very small pink beads which measure 21 to 22 to the inch. Some of these have a white lining in the perforation.

Except for the six fragmentary specimens, beads of these types were used for embroidery purposes. They are undatable since they came into use at a very early period and can still be purchased.

ANIMAL REMAINS

Animal bones were not common at this site, and all, regardless of condition, were saved. Few species and probably few individuals were represented. The 195 specimens returned to the laboratory yielded 55 identifiable bones from 5 species, in the following proportions:

Species	No. of bones
Bison:	
Mature	25
Immature	4
Deer (or antelope) (mature)	1
Elk (immature)	2
Dog (or coyote):	
Mature	1
Immature	21
Turtle (<i>Chrysemys belli</i>)	1
Total	55

LIBBY, O. G.

1908. Typical villages of the Mandans, Arikara and Hidatsa in the Missouri Valley, North Dakota. Coll. North Dakota State Hist. Soc., vol. 2, pp. 498-508.

1920. The Arikara narrative of the campaign against the hostile Dakotas, June, 1876. Coll. North Dakota State Hist. Soc., vol. 6, 276 pp.

MATTHEWS, WASHINGTON.

1877. Ethnography and philology of the Hidatsa Indians. Miscellaneous Publ. No. 7, U.S. Geol. and Geogr. Surv. Washington, D.C.

MAXIMILIAN, *see* Wied-Neuwied, Maximilian Alexander Philipp, Prinz von.

METCALF, GEORGE.

1963. Notes on some small sites on and about Fort Berthold Indian Reservation, Garrison Reservoir, North Dakota. Bur. Amer. Ethnol. Bull. 185, Riv. Bas. Surv. Pap. No. 26.

MORGAN, LEWIS H.

1871. Some stone and bone implements of the Arickarees. 21st Ann. Rep. Regents Univ. State New York, pp. 25-46.

REID, RUSSELL.

1947-1948. Lewis and Clark in North Dakota. Bismarck.

STOUT, A. B.

1908. Field notes; files of the State Hist. Soc. of North Dakota. Bismarck.

STRONG, WILLIAM DUNCAN.

1935. An introduction to Nebraska archeology. Smithsonian Misc. Coll., vol. 93, No. 10.

1940. From history to prehistory in the northern Great Plains. Smithsonian Misc. Coll., vol. 100, pp. 353-394.

VAN OSTRAND, FERDINAND A.

1943. Diary of Ferdinand A. Van Ostrand, pt. 3. Russell Reid, ed. North Dakota Hist. Quart., vol. 10, No. 2.

WEDEL, WALDO RUDOLPH.

1936. An introduction to Pawnee archeology. Bur. Amer. Ethnol. Bull. 112.

WHEELER, OLIN D.

1904. The trail of Lewis and Clark, 1804-1904. 2 vols. New York and London.

WIED-NEUWIED, MAXIMILIAN ALEXANDER PHILIPP, PRINZ VON.

1906. Travels in the interior of North America. In "Early Western Travels." Reuben Gold Thwaites, ed. Vols. 22-24. Cleveland.

WILL, GEORGE F.

1924. Archeology of the Missouri Valley. Anthropol. Pap. Amer. Mus. Nat. Hist., vol. 22, pt. 6, pp. 295-344.

WILL, GEORGE F., and HECKER, THAD C.

1944. Upper Missouri River Valley aboriginal culture in North Dakota. North Dakota Hist. Quart., vol. 11, Nos. 1 and 2, pp. 5-126.

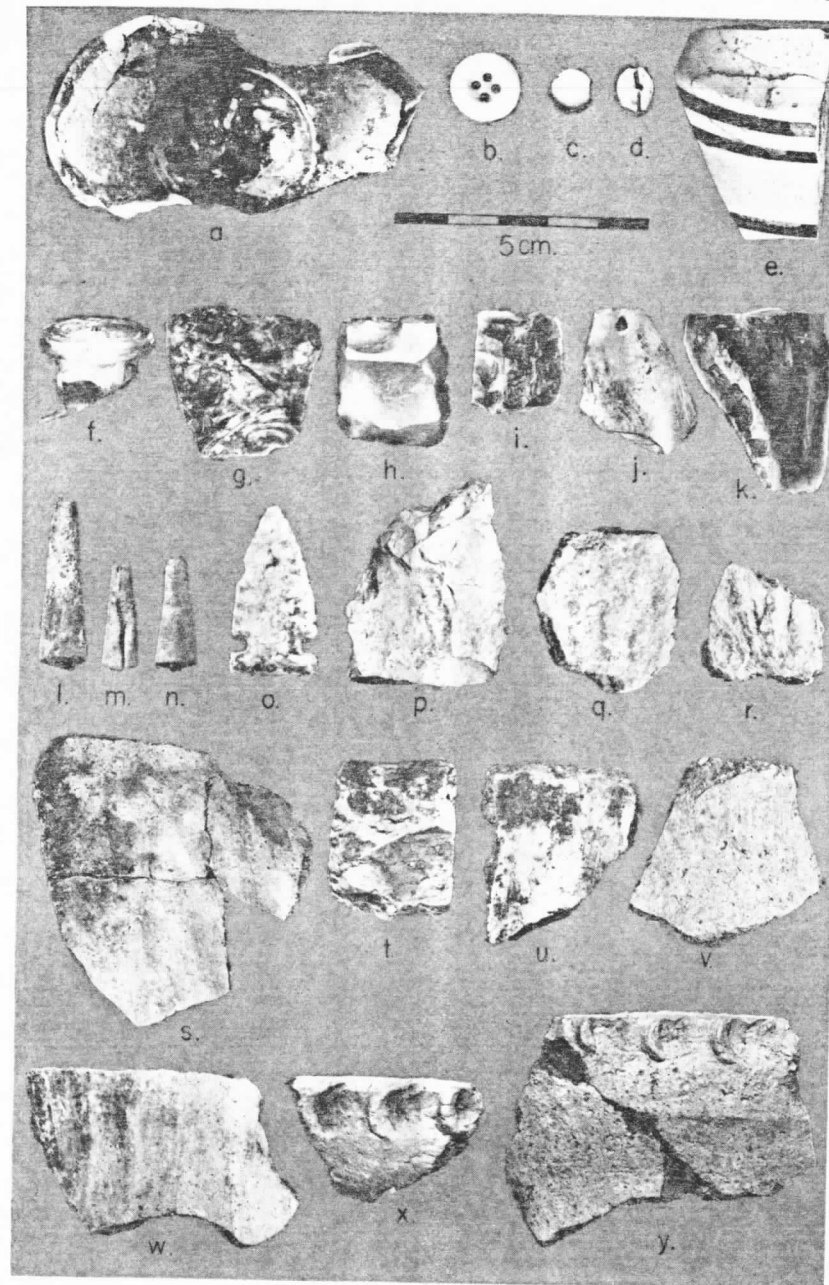
WILSON, GILBERT LIVINGSTONE.

1917. Agriculture of the Hidatsa Indians: An Indian interpretation. Univ. Minnesota Stud. Social Sci., No. 9.

1934. The Hidatsa earthlodge. Bella Weitzner, ed. Anthropol. Pap. Amer. Mus. Nat. Hist., vol. 33, pt. 5, pp. 341-420.

WOOLWORTH, ALAN R.

1956. Archeological investigations at site 32ME59 (Grandmothers Lodge). North Dakota Hist., vol. 23, No. 2, pp. 78-102.



Artifacts from the Star Village site.