

On the fourth day of February, 1683, La Salle's party, after having sailed ten leagues below the mouth of the Missouri, arrived at the village of the Tamaoas situated on the east bank of the Mississippi. However, none of the Indians were seen as they had gone to their winter encampment in the woods.<sup>1</sup> Charlevoix, on Oct. 10, 1721, visited the village of the "*Caquiias* and *Tamarouas*, two Illinois Tribes which have been united." This uniting of the two tribes probably occurred subsequent to the time of La Salle's expedition and may account for the Cahokias not having been mentioned by Tonti. Continuing, Charlevoix says: "This village is situated on a small river which runs from the east."<sup>2</sup>

In 1720 a party of Tamaroas were taken to France and presented to the king; they later returned to their native village.<sup>3</sup> The Koakias, during the year 1752, were at war with the Foxes which was caused by the Koakias treacherously murdering a hunting party of the other tribe.<sup>4</sup>

The site of the ancient village of the Cahokias and Tamaoas was probably not far distant from the present settlement which now perpetuates the name of the former tribe. Near this village, in the year 1769, Pontiac was murdered.

<sup>1</sup> An Account of Monsieur de la Salle's Last Expedition. Tonti. London, 1698, p. 77.

<sup>2</sup> Journal of a Voyage to North America. Charlevoix, London, 1761. Vol. II, pp. 218-219.

<sup>3</sup> Bossu. Travels, etc. English translation. London, 1771, Vol. I, p. 140.

<sup>4</sup> Bossu. Vol. I, p. 129.

## PAPERS

OF THE

PEABODY MUSEUM OF AMERICAN ARCHAEOLOGY AND  
ETHNOLOGY, HARVARD UNIVERSITY

Vol. III.—No. 2

## EXPLORATION OF MOUNDS, COAHOMA COUNTY, MISSISSIPPI

BY

CHARLES PEABODY

WITH SEVENTEEN PLATES

CAMBRIDGE, MASS.

PUBLISHED BY THE MUSEUM

JUNE, 1904

## OTHER STONE OBJECTS.

Hammerstones of various shapes, natural stones brought from the river shoals, and dropped on the ground were common, as well as the usual awl sharpeners. On one of the last a certain rude design of criss-cross lines seems to have been intentional.

*Stone disks.* Eight stone disks were found showing some variety, as follows:

No.	Diameter	Sides	Edges	See class <sup>1</sup> (Fowke p. 99)	Thickness
1.	1 $\frac{1}{4}$ "	Flat	Rounding	D	$\frac{1}{3}$ "
2.	1 $\frac{3}{4}$ "	Convex	Straight	F	$\frac{1}{2}$ "
3.	1 $\frac{3}{4}$ "	"	"	"	$\frac{3}{4}$ "
4.	2 $\frac{1}{4}$ "	Flat	Convex	P	1 "
5.	3 $\frac{1}{2}$ "	"	Rough		1 $\frac{1}{2}$ "
6.	3"	{ 1 Convex 1 Pitted	Convex	O	1 $\frac{1}{2}$ "
7.	2 $\frac{3}{4}$ "	{ 1 Convex 1 Straight	Straight	O	1 $\frac{1}{4}$ "
8.	2 $\frac{1}{4}$ "	Convex	Rough	L	1 $\frac{1}{4}$ "

Two plummets (Plate XVI) were found, both rough: one from the surface and one from the mound. They are both pear-shaped, that from the mound oval, that from the surface tapering from near the bottom, and both are grooved for suspension. That from the mound (broken) is two and one-quarter inches long, that from the surface two and one-half inches long.

Three perforated pendants were found: one was a flat pebble, one and a half inches long, one, a flat pear-shaped stone three and a half inches long, with the sides worked to a blunt edge and with parallel scratchings on one side; the third was a flat pear-shaped pebble one and one-half inches long, found under the skull of skeleton 121.

## SHELL.

Shells, as remarked above, were very numerous, occurring as the refuse of ancient feasts, or as the débris from the workshops where shells were used in tempering the pottery. Outside, however, of beads and occasional ornaments, the only modification of the natural forms was by perforation; five perforated unio shells

<sup>1</sup> See Bur. Eth. 13 (*op. cit.*).

were found, four of which may have been used as spoons or scrapers, and one as an ornament.

## MISCELLANEOUS OBJECTS OF SHELL AND OTHER MATERIALS.

(PLATE XX)

## OCCURRENCE.

1. *Of shell.*

Eight shell beads were found by the arm, thigh and neck of Skeleton 12 (bundle burial).

Position: 1' down in the Edwards Mound.

Two shell beads were found with Skeleton 19, one near the chin (full-length burial).

Position: 1' down in the Edwards Mound.

One shell bead, two beads of quartz and a brass bell were found with Skeleton 25 (bundle burial and a child's skeleton).

Position: 2' down in the Edwards Mound.

Shell beads were found with Skeleton 32, near the neck and near the left wrist; in the latter case they lay in order as if having been on a string; there were also some beads near the neck.

Position: 2' 3" down in the Edwards Mound.

Shell beads were found near the neck of Skeleton 34 (bundle burial in a seeming intrusion).

Position: 2' 10" down in the Edwards Mound.

Four shell beads were found with Skeleton 36 (probably a bundle burial; that of a child).

Position: 1' 8" down in the Edwards Mound.

Shell beads were found with Skeleton 138 (bundle burial).

Position: 3' 10" down in the Edwards Mound.

Shell beads were also found in the general digging of the Edwards Mound (see No. 61777, Peabody Museum) and on the surface of the surrounding field (see No. 61861, Peabody Museum).

A shell bead and a brass perforator were found under a skull in the Cemetery Mound.

2. *Beads of glass.*

Two series of glass beads were found under the chin of Skeleton 4 (bundle burial).

Position: 2' 9" down in the Edwards Mound.

Beads of glass, a brass point and small shells were (all) found under the skull of Skeleton 5 (bundle burial).

Position: 3' 1" down in the Edwards Mound.

Eleven glass beads were found in a group with Skeleton 7 (bundle burial).

Position: 3' 4" down in the Edwards Mound.

A glass bead was found with Skeleton 8 (bundle burial).

Position: 1' 5" down in the Edwards Mound.

Glass beads were found under the left humerus of Skeleton 28 (a bundle burial).

Position: 1' 6" down in the Edwards Mound.

Glass beads were found with Skeleton 31 (a bundle burial).

Position: 1' 3" down in the Edwards Mound.

Glass beads were also found on the surrounding surface near the Edwards Mound.

### 3. *Beads of other substances.*

One bead of jasper was found in the general digging of the Edwards Mound in cutting 15.

One bead of galena was found with an unworked piece of the same substance 8" down in the Dorr Mound (see Nos. 57253 and 57256, Peabody Museum).

Two beads of quartz were found with Skeleton 25 (a bundle burial of a child).

Position: 2' down in the Edwards Mound.

A long bead of brass was found inside the occiput of Skeleton 151 (a full length burial in an intrusion).

Position: 1' 6" down in the Edwards Mound.

Two beads of brass were found with Skeleton 157 (a bundle burial of a child).

Position: 11" down in the Edwards Mound.

### 4. *Other articles.*

A stone tube (see No. 61855, Peabody Museum) found on the surface was presented by Mrs. P. M. Edwards.

One brass bell was found under the left ear of Skeleton 25 (a bundle burial of a child).

Position: 2' down in the Edwards Mound.

One brass bell was found with Skeleton 14, near, or in contact with the skull (a "scissors-shaped" burial).

Position: 1' 2" down in the Edwards Mound.

A brass point was found with Skeleton 5 under the skull, accompanied by glass beads and shells (a bundle burial).

Position: 3' 1" down in the Edwards Mound.

A brass perforator was found with a skull in the Cemetery Mound.

Brass was found near the neck of Skeleton 32, the bone near it being discolored by the brass.

Position: 2' 3" down in the Edwards Mound.

Quartz was found in the Dorr Mound (see No. 57251, Peabody Museum) and with Skeleton 28 (a bundle burial).

Position: 1' 6" down in the Edwards Mound.

Mica was found with Skeleton 139 (a bundle burial).

Position: 8" down in the Edwards Mound.

Parched corn was found at the bottom of the hole No. 7; the top of this hole was 1' down, the bottom 2' 10" down in the Edwards Mound.

The greatest depth recorded at which articles possibly of white man's manufacture were found was in the Edwards Mound: for glass 3' 4"; for brass 3' 1".

There is no reason to believe, from the evidence of the articles found, that the lower part of the Edwards Mound was constructed or disturbed after white contact.

*Form of the beads.* The beads of glass are all globular; the smaller flattened, the larger elliptical; they are of iridescent blue color. The size varies from a diameter of  $1/10''$  with a perforation  $1/30''$  in diameter to  $4/10''$  in diameter with a perforation  $1/10''$  in diameter.

The beads of shell are many of them discoidal. The size is from  $1/5''$  in diameter,  $3/20''$  in thickness, with perforation  $1/10''$  in diameter, to  $8/10''$  in diameter,  $4/10''$  in thickness, with perforation  $1/5''$  in diameter.

Seven beads of shell of the massive type were found. The largest is  $1\ 1/10''$  in diameter,  $9/10''$  in thickness with a perforation  $1/10''$  in diameter.

The jasper bead is tubular,  $3/4''$  long  $6/10''$  in diameter, with a countersunk perforation  $3/10''$  in diameter at the end.

The quartz beads are tubular and countersunk, one quadrangular; one hexagonal.

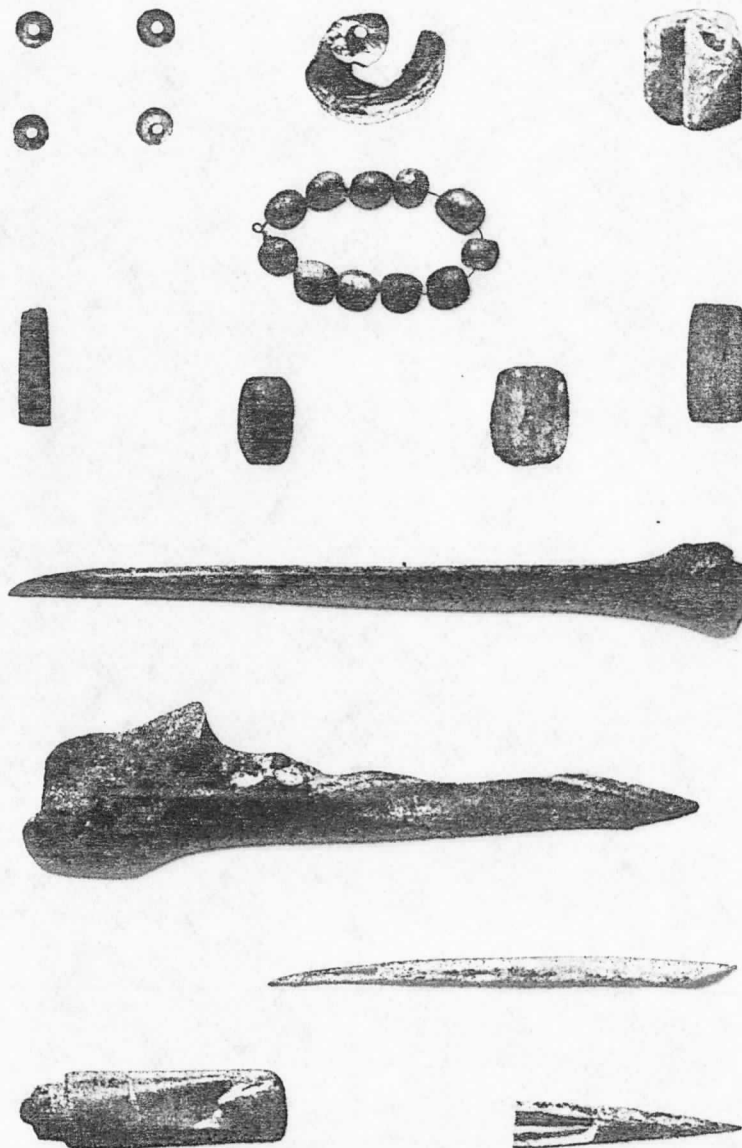
The hexagonal bead is  $9/10''$  long,  $7/10''$  in diameter, with a perforation  $3/10''$  in diameter at the end.

The quadrangular bead is  $1\ 1/10''$  long,  $6/10''$  in diameter, with a perforation  $5/20''$  in diameter.

## DESCRIPTION OF PLATE XX.

(See pages 46 ff.)

Line 1. (Left to right.)	DIAMETER.	TYPE.
1. Four beads of shell.	$\frac{3}{8}$ "	Discoidal.
	Across wing.	
2. Bead of shell.	$1\frac{1}{4}$ "	Massive.
	Across wing.	
3. Bead of shell.	$\frac{7}{8}$ "	Massive.
Line 2.	AVERAGE LENGTH.	
Beads of glass in a string.	$\frac{3}{8}$ "	
Line 3.	LENGTH.	
1. Bead of brass.	$1\frac{1}{8}$ "	Tubular.
2. Bead of jasper.	$\frac{3}{8}$ "	Tubular. See p. 48
3. Bead of quartz.	$\frac{3}{8}$ "	Tubular. See p. 48 Six sides.
4. Bead of quartz.	$1\frac{1}{8}$ "	Tubular. See p. 48 Four sides.
Line 4.	LENGTH.	
Awl of bone.	$6\frac{7}{8}$ "	
Line 5.		
Awl of bone.	$6\frac{1}{4}$ "	
Line 6.		
Awl of bone.	$4\frac{1}{8}$ "	
Line 7.		
1. Fragment of "atlatl" bone.	$2\frac{1}{4}$ "	
2. Projectile point of bone.	$2\frac{1}{8}$ "	



MISCELLANEOUS OBJECTS FROM COAHOMA COUNTY, MISSISSIPPI.