

AN ARCHEOLOGICAL INVESTIGATION
OF MISSION CONCEPCIÓN
SAN ANTONIO, TEXAS

by Dan Scurlock and Daniel E. Fox

with appendixes by Viola Rawn and James Hoggins

Edited by Curtis Tunnell and Kathy Freydenfeldt

Office of the State Archeologist, *Report* 28
TEXAS HISTORICAL COMMISSION

January 1977
Austin

ABSTRACT

During the fall of 1971 and the spring of 1972 personnel from the Office of the State Archeologist, Texas Historical Commission, conducted extensive archeological excavations at Mission Nuestra Señora de la Purísima Concepción de Acuña in San Antonio, Texas. Deep test pits excavated next to the church foundation showed that this soundly constructed feature was not the source of moisture which caused deterioration of the lower walls of the church, as was initially believed. Another 16 archeological and architectural features were identified and recorded at the site during the excavations, including remains of the west compound wall. Information derived from analysis of the 12,194 artifacts and 14,165 faunal specimens, combined with architectural and historical data, has provided a more comprehensive understanding of the mission occupants and their activities during the 245-year history of this important Spanish Borderlands site.

Fig. 30. GLASS ARTIFACTS

- a. Hand-formed neck, drawn from molded or free-blown body, dark green
- b. Impressed design, clear goblet
- c. Mold-made bee pin
- d. Translucent, dark blue, faceted bead
- e. Mold-made, opaque, faceted bead
- f. Clear, faceted bead attached to silver-plated chain
- g. Handmade clear marble with center of spiraled multi-colored glass



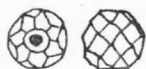
a



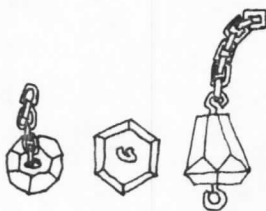
c



d



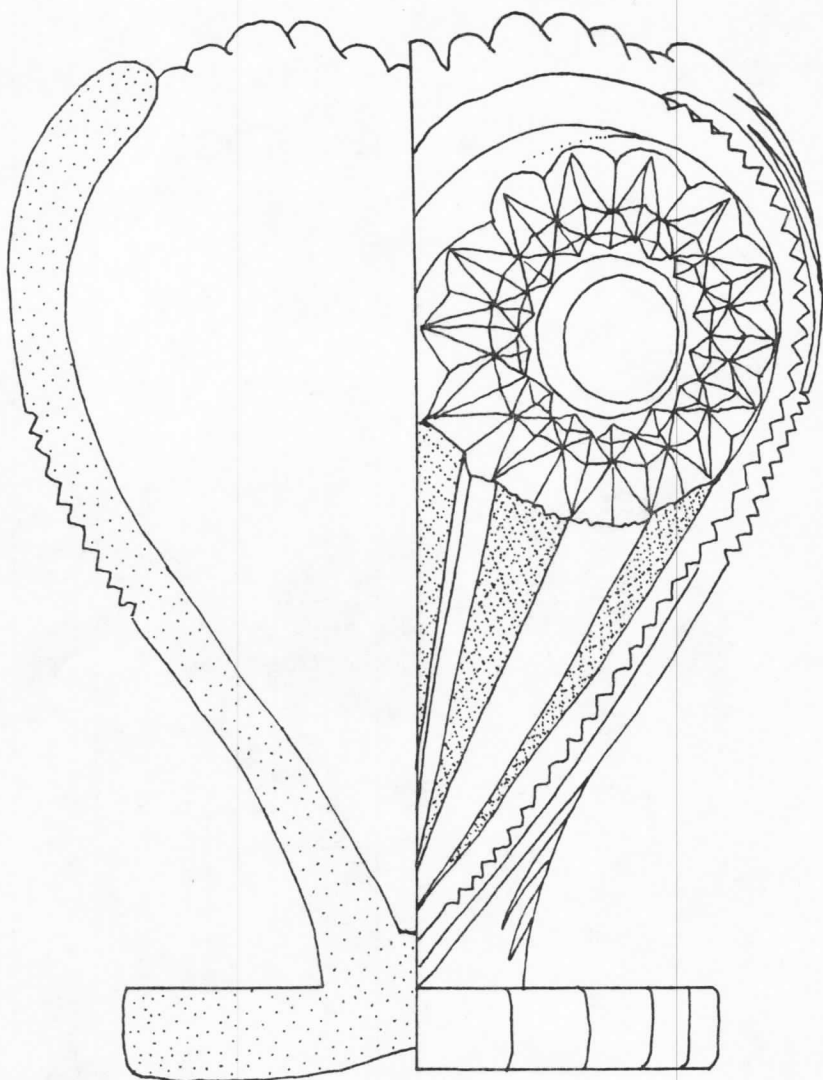
e



f



g



b

FIG. 30

PERSONAL ITEMS (87 specimens)

Pin (1 specimen)

A small green, mold-made effigy of a bee mounted on a wire pin (Fig. 30c) is similar in color to "7-Up" bottle glass; it is 1.43 cm long and 1.37 cm wide.

Spectacle Lens Fragments (2 specimens)

These curved and rounded, ground and polished fragments of a clear glass spectacle lens have a maximum thickness of 2.3 mm.

Buttons (18 specimens)

These are white porcelaneous glass buttons. All except three have four holes. One, 1.05 cm in diameter, is a domed button with a convex front and a flat back with a threaded hole, probably for the attachment of a metal shank and eye. Another, 1.03 cm in diameter, has a glass shank. The third button, 1.66 cm in diameter, has two holes, a concave front and a convex back. The 15 four-hole buttons range from 8.2 to 18.3 mm in diameter.

✓ Beads (6 specimens)

Tubular or "Bugle" (1 specimen)

This 18th-century (R.K. Harris 1972:personal communication) translucent blue glass bead is 2.48 cm long, with an outside diameter of 4.5 mm.

Doughnut-Shaped, Faceted (1 specimen)

This simple, asymmetrical, red glass bead is 5.7 mm wide and 3.1 mm thick, with an interior diameter of 1.6 mm.

Barrel-Shaped, Faceted (1 specimen)

This translucent, dark blue glass bead with 16 facets (Fig. 30d) is similar to Harris' (1967:151) Number 130 type. It is 5.6 mm long and 5.9 mm thick, with an interior diameter of 2.3 cm.

Round, Faceted (1 specimen)

This simple, mold-made, opaque black glass bead with 40 facets (Fig. 30e) is similar to Harris' (1967:154) Number 172 type. It measures 7.1 mm in diameter.

Teardrop-Shaped, Faceted (1 specimen)

This relatively recent clear glass bead with 18 facets (Fig. 30f) is attached to a broken length of silver-plated chain. The specimen measures 8.1 mm in length and has a maximum width of 9 mm.

Barrel-Shaped (1 specimen)

This 19th- or 20th-century mold-made, light blue glass bead is 5.2 mm wide and 4.4 mm thick, with an interior diameter of 1.5 mm.

Marbles (60 specimens)

Type 1 (2 specimens)

These are handmade, each with two irregular spots on opposite sides where the marble was twisted and cut from a glass rod, and then ground to a rough finish. Each is made of clear glass with spirals of colored glass through the center (Fig. 30g). Dating probably 1846-1914 (Randall 1971:104), they are 2.3 and 1.91 cm in diameter.

Type 2 (21 specimens)

These are opaque marbles, some of solid colors, and others with swirls of colored glass near their granular surfaces. Type 2 specimens, 1.41-1.73 cm in diameter, are probably early machine-made marbles dating 1901-1926 (Randall 1971:105).

Type 3 (37 specimens)

These translucent marbles have swirls of colored glass beneath their surfaces. All are probably machine-made marbles which date from about 1926 to the present.

MISCELLANEOUS FORMS (2,178 specimens)

Lamp Chimney? (4 specimens)

These are rim sherds from a mold-made, hand-finished, white glass lamp chimney (or fancy container) with a wavy, folded rim.

Insulator (1 specimen)

This body fragment of a large, ribbed, mold-made electrical insulator is of pink, translucent glass, 6.4 mm thick.

Light Bulb Fragments (5 specimens)

These fragments of clear glass light bulbs of various types and sizes have pieces of filament wire attached.